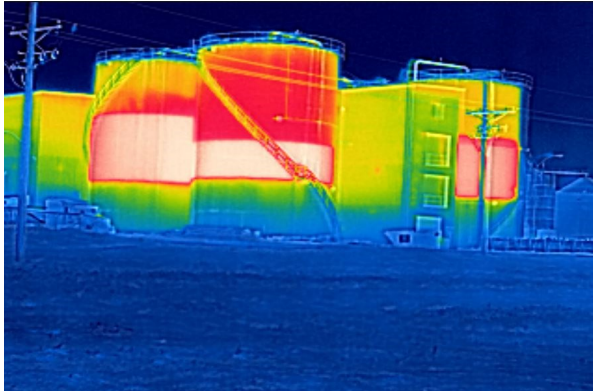


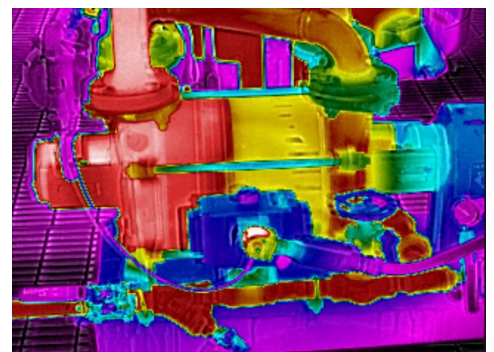
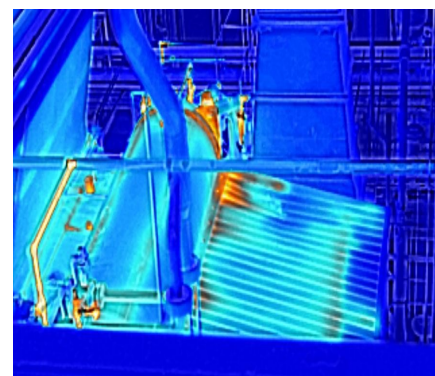
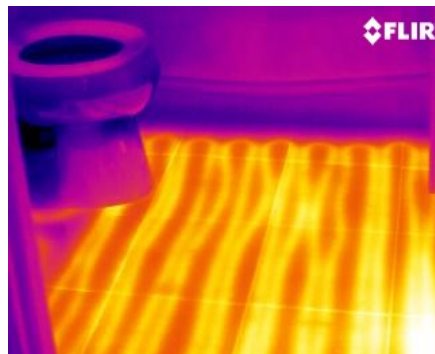
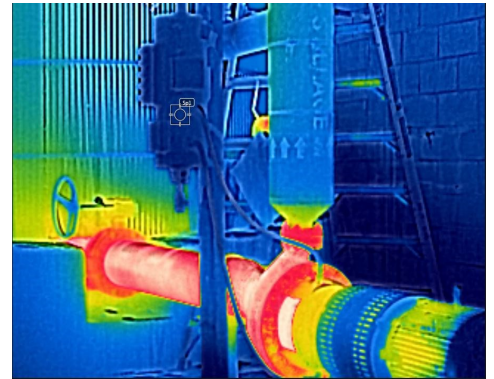
Infrared Analysis



Applications

Infrared has many uses within residential, commercial and industrial environments. Infrared cameras have become inexpensive and easy to operate. The uses of this technology covers a broad range of applications that can be used to identify, verify and confirm a particular finding or problem.

- Can be used indoors or outdoors, day or night
- Identify potentially hazardous issues from a distance
- Prioritize findings based on temperature, knowledge of system operation, manufacturer setpoints and alarms
- Verify installation of new equipment or repairs were done correctly
- Energy loss from slipping belts to missing insulation
- Pest infestation and moisture intrusion
- Verification of inventory levels
- Surveillance / Animal control
- Veterinarian / Search and Rescue
- Improper product temperature or fluid flow
- Missing or damaged refractory in high temperature applications
- Call us today and let us show you ways to save money!



Midlands Reliability & Consulting LLC
Engineered Mechanical Equipment
Condition Monitoring Technologies
Omaha, NE daver@midlandsrc.com
Dave Reynolds: 402.676.5984
www.midlandsrc.com

